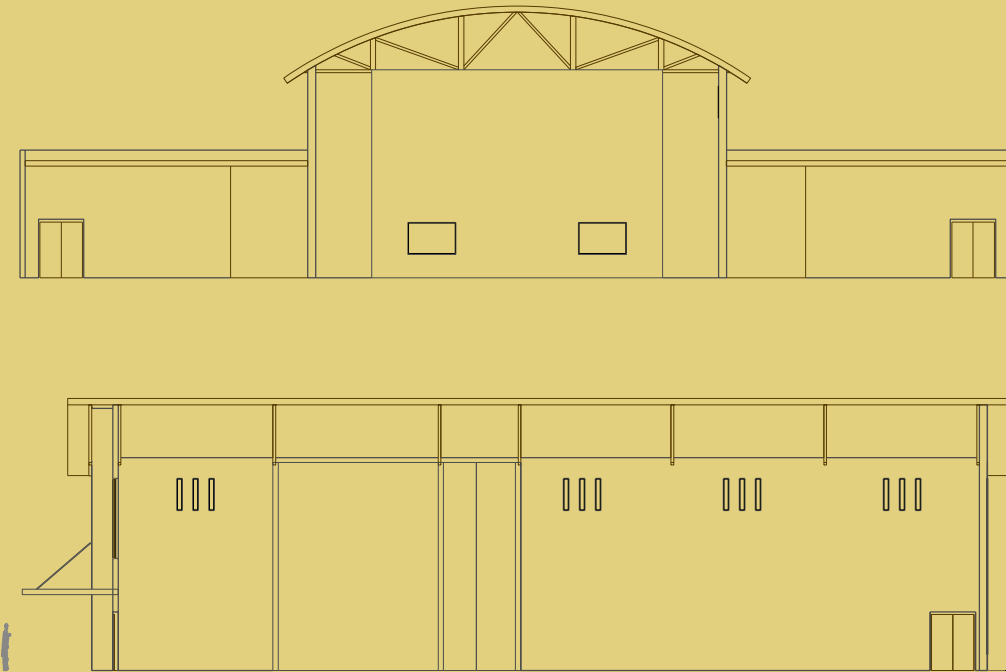
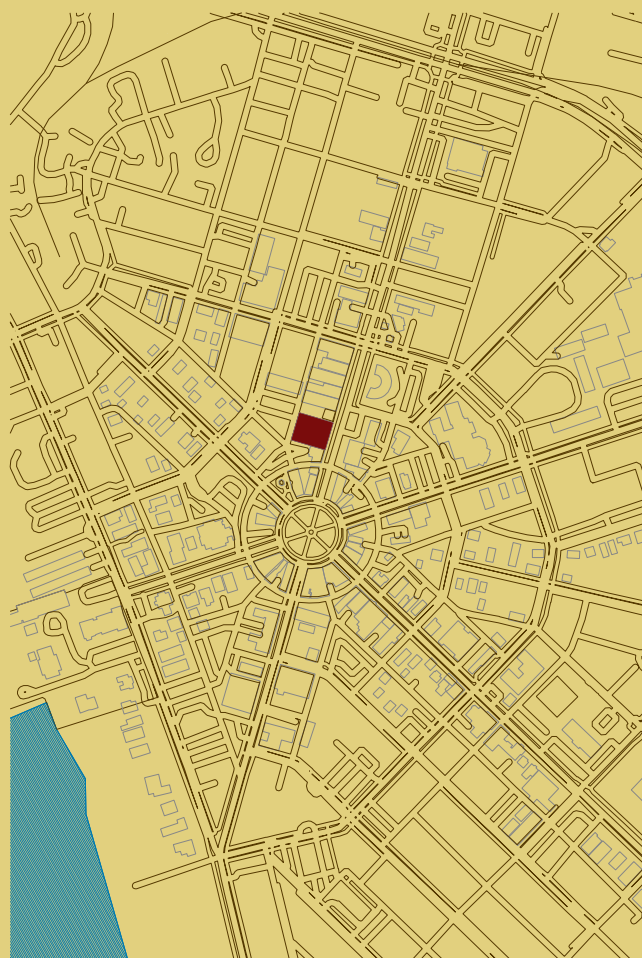


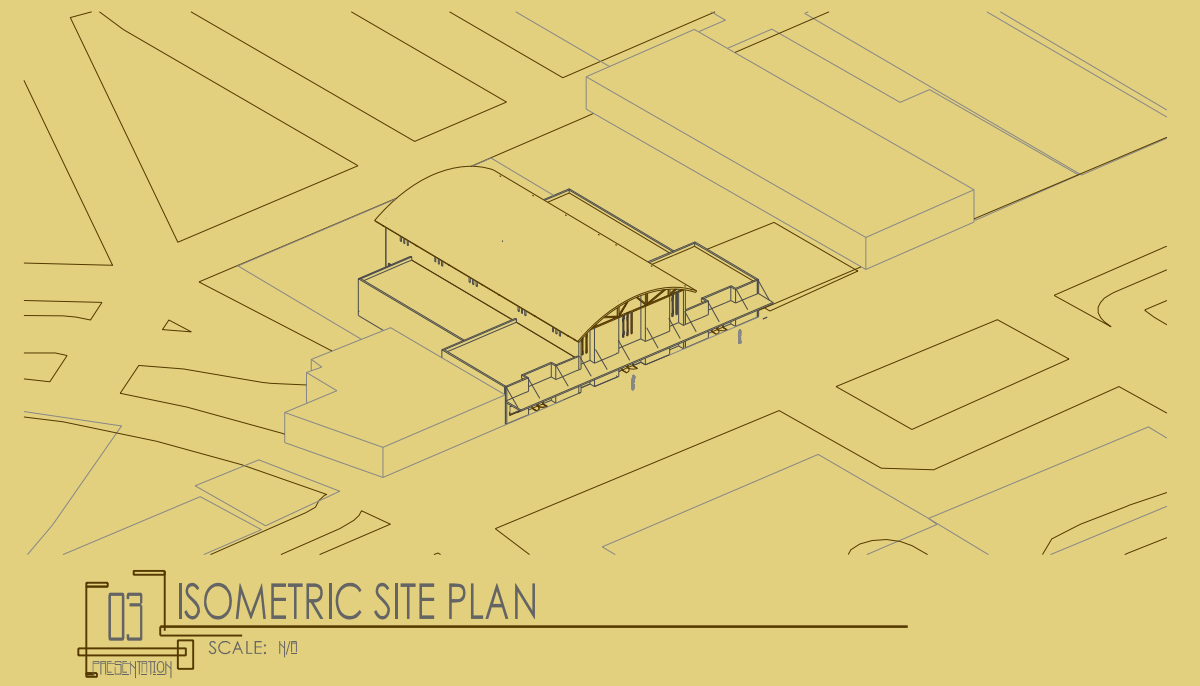
01 GENERAL PLAN AT SCHEMATIC PHASE  
SCALE: 1/32" = 1'-0"



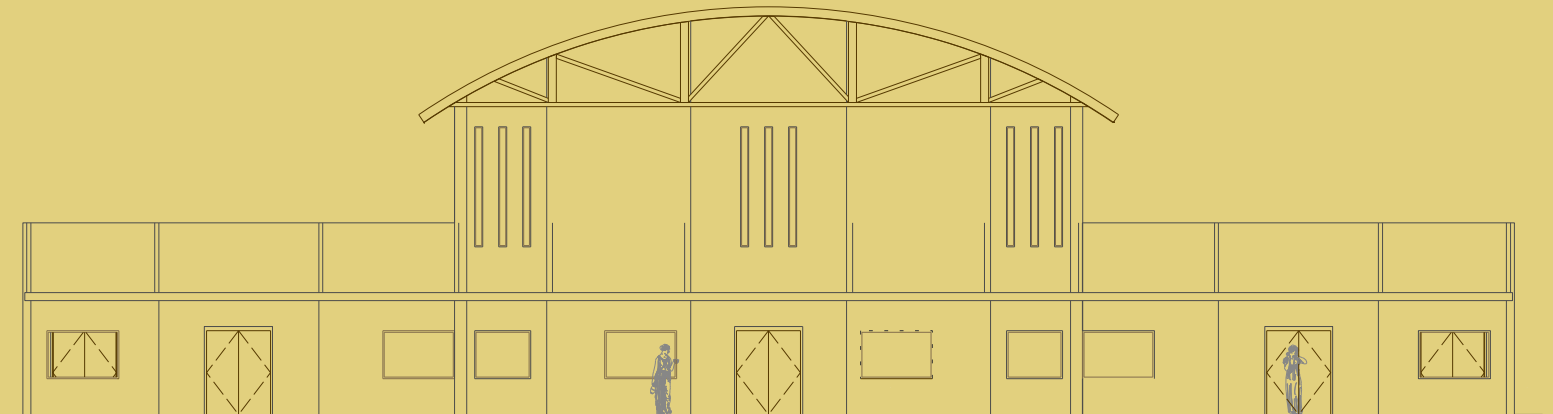
02 TRANSVERSAL & LONGITUDINAL SECTIONS  
SCALE: 1/8"



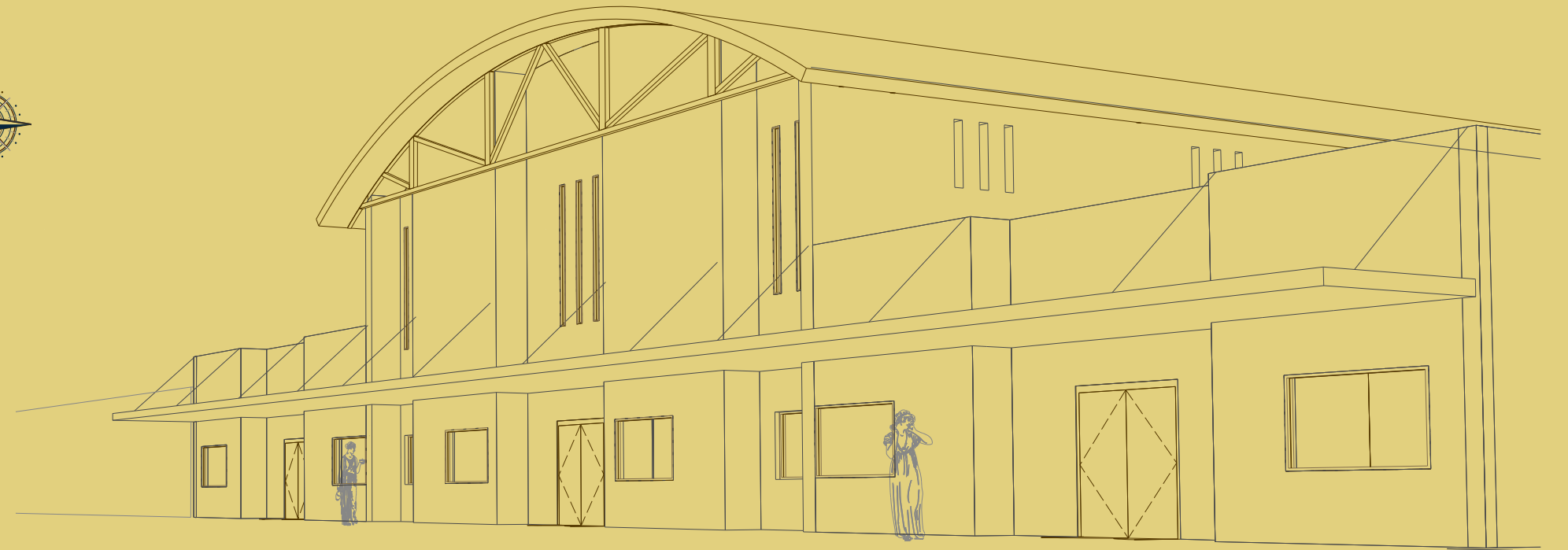
03 SITE PLAN & LOCATION  
SCALE: 1/8"



04 ISOMETRIC SITE PLAN  
SCALE: 1/8"



05 FRONT ELEVATION  
SCALE: 1/8" = 1'-0"



06 EXTERIOR PERSPECTIVE VIEW AT BASIC SCHEMATIC PHASE  
SCALE: 1/8"

TO OPTIMIZE THE DESIGN OF THIS DANCE STUDIO, WE PRIORITIZED THE FOLLOWING:

**EFFICIENT SPACE UTILIZATION:**  
MAXIMIZING THE USE OF AVAILABLE SPACE TO ACCOMMODATE THE STUDIO'S FUNCTIONS WITHIN A DETERMINED BUDGET.

**STRUCTURAL EFFICIENCY:**  
EMPLOYING OPTIMAL FORMS AND MATERIALS FOR A ROBUST AND EFFICIENT STRUCTURE.

**URBAN VITALITY:**  
CREATING VISUALLY ENGAGING FORMS AND TEXTURES THAT CONTRIBUTE TO THE DOWNTOWN AREA'S CHARACTER.

**RETAIL INTEGRATION:**  
INCORPORATING RETAIL SPACES THAT COMPLEMENT THE STUDIO AND ENHANCE THE OVERALL URBAN EXPERIENCE.

**DANCE UNLIMITED STUDIO**  
139 N Ridgewood Dr, Sebring, FL 33870

Drawings are property of Avant-Garde Engineering. Services are not to be reproduced or distributed without the consent of the owner. In case of copyright, the owner is responsible for proper risk management of intellectual property rights.

AVANT-GARDE ENGINEERING  
2231 19th Street SW  
Naples FL 34117  
tel: (727) 304-3147  
www.Avant-Garde.Engineering  
info@Avant-Garde.Engineering